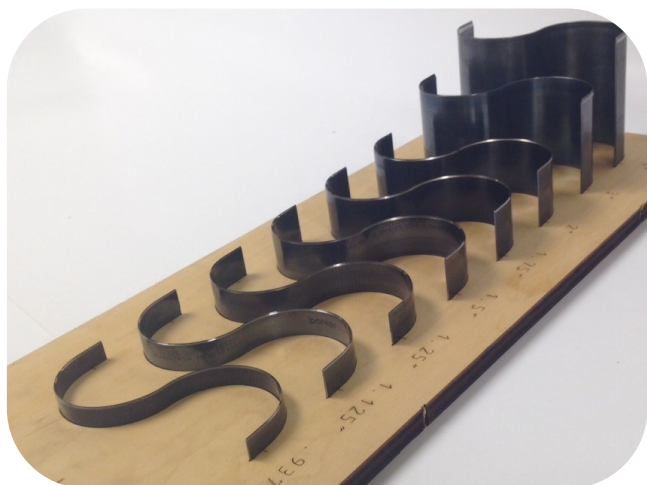


SHARPLES

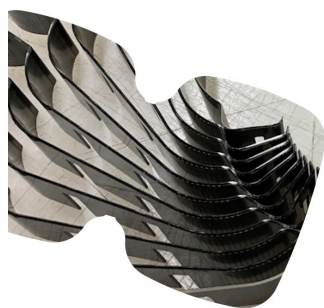
Bending all the rules

**Creative.
Intricate.
Exceptional.**

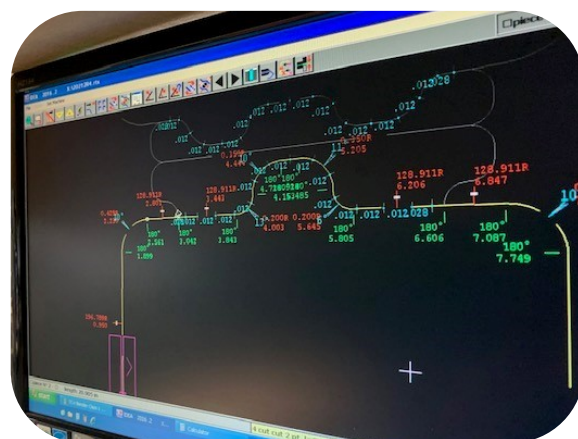


At Sharples, we understand the need for flexibility in different knife heights. Our long history in diecutting plastics makes us the leader for steel rule dies in the thermoforming industry. Tool influencers such as bevels, edges, and angles are considered with every job. Our wide range of knife inventory provides our customers with the flexibility for different jobs. All our equipment is state of the art, accommodating all heights of steel rule. Sharples "Bends all the Rules."

CNC bending aids in diminishing high spots in a die, dramatically affecting the die's flatness. Extra cavities of steel rule knife can easily be ordered for customers to have on hand for emergencies or maintenance.



Nicked tear strips and perforated hinges can be repeated, giving your customer an opening feature that can be duplicated in production each time it runs.



- ◆ .937", 1", 1 1/2", 2", 3" and 4" high steel rule knife
- ◆ Nicking inline and customer laser-cut knives.
- ◆ Wide range of knife inventory

(Contact your Sharples Customer Service Rep for more information)

211 John Dietsch Square
North Attleboro, MA 02763

TEL 508-695-5656
FAX 508-695-8804

EMAIL info@sharplesdie.com
WEB SharplesDie.com